



Essential Validation Services



Sample:

Client: | Nature's Fusions
Sample: | Laurel Leaf (Laurus nobilis L.)
Batch # | NF-LAUR-18-A
CAS Number | 8006-78-8
Type: | Essential Oil

Conclusion:

- No adulterants, diluents, or contaminants were detected via this method.
- This oil meets the expected profile for genuine essential oil of Laurel Leaf (Laurus nobilis L.)



X 

Validated By:

Essential Validation Services

747 SW 2nd Ave, Gainesville, FL 32601

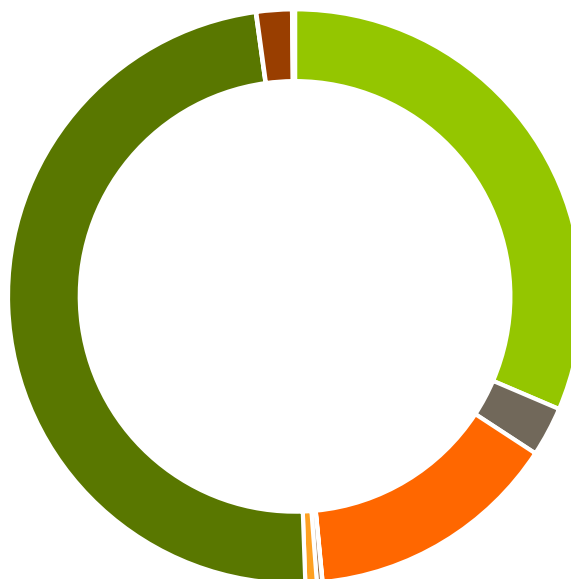
Phone: 317-361-5044 E-mail: Adam@essentialvalidationservices.com

Summary of Analyses

A fresh sample of Laurel Leaf (Laurus nobilis L.) Essential Oil (10 uL in .5to.5 mL Hexane + ETOH) was prepared and analyzed via split injection GC/EI-MS.

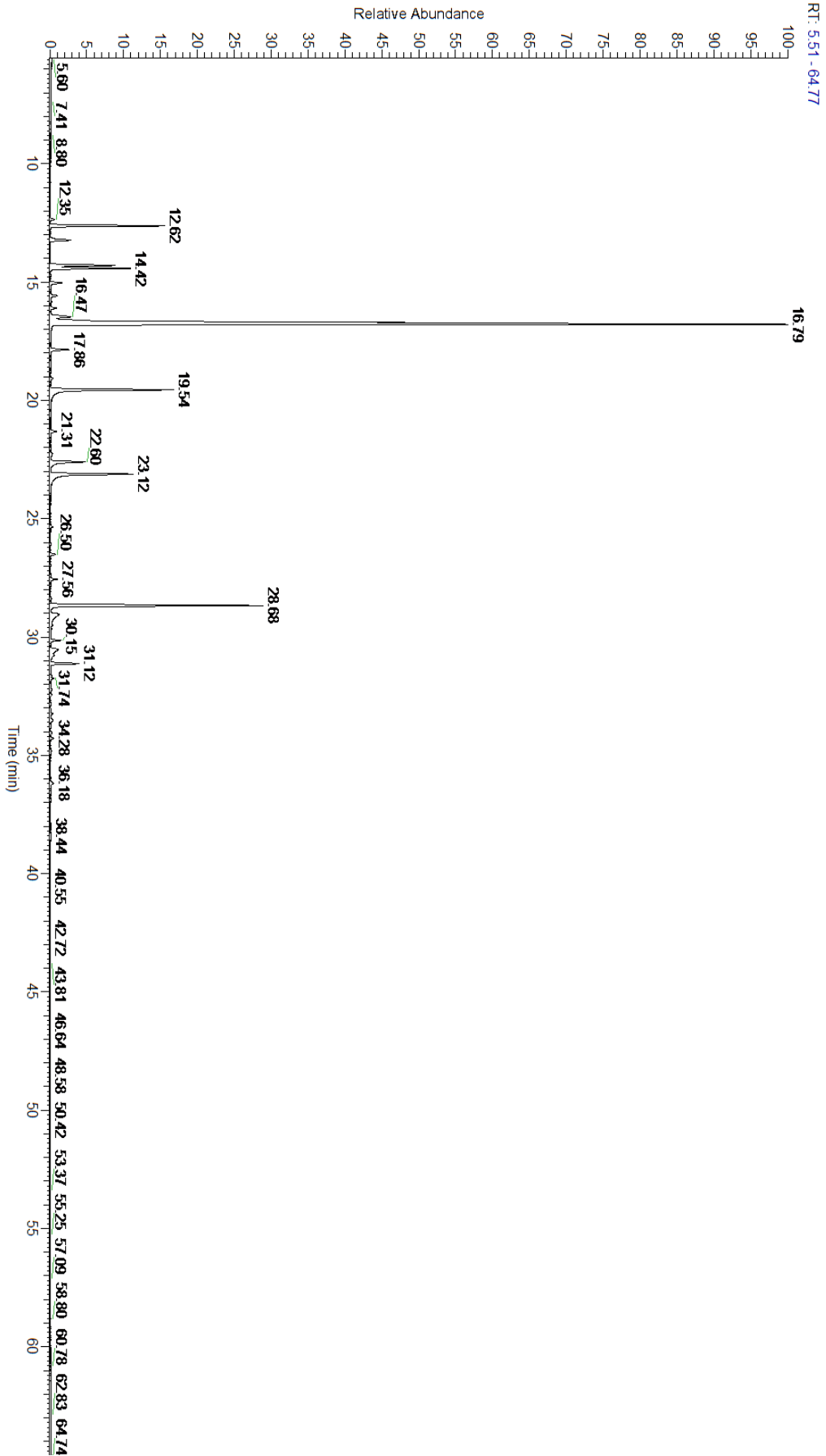
Main Compounds	Percentages
1,8-Cineole	37.63%
Limonene	14.21%
alpha-Terpinyl acetate	10.57%
Linalool	6.94%
alpha-Pinene	5.21%
alpha-Terpineol	5.06%
beta-Pinene	3.76%
Sabinene	3.16%
Terpinen-4-ol	2.14%
para-Cymene	1.44%
beta-Caryophyllene	1.35%
Camphene	1.10%
Eugenol	1.08%

Monoterpenes	Sesquiterpenes	Monoterpenols	Sesquiterpenols	Ketones
31.42%	2.79%	14.26%	0.02%	0.30%
Esters	Ethers	Aldehydes	Phenols	Other
0.64%	48.38%	0.03%	1.99%	0.17%



- Monoterpenes
- Sesquiterpenes
- Monoterpenols
- Sesquiterpenols
- Ketones
- Esters
- Ethers
- Phenols
- Other

ESSENTIAL VALIDATION SERVICES | 747 SW 2ND AVE GAINESVILLE, FLORIDA 32601 | 317-361-5044



Total Percentage		99.83%			
Peak Number	RT	Area %	Compound Name	RI	Chemical Family
1	12.35	0.18%	alpha-Thujene	927.80	Monoterpene
2	12.62	5.21%	alpha-Pinene	936.10	Monoterpene
3	13.23	1.10%	Camphene	950.30	Monoterpene
4	14.30	3.16%	Sabinene	973.00	Monoterpene
5	14.42	3.76%	beta-Pinene	974.00	Monoterpene
6	15.04	0.62%	Myrcene	989.20	Monoterpene
7	15.58	0.36%	alpha-Phellandrene	1002.00	Monoterpene
8	15.83	0.05%	delta-3-Carene	1008.00	Monoterpene
9	16.11	0.31%	alpha-Terpinene	1014.00	Monoterpene
10	16.47	1.44%	para-Cymene	1024.30	Monoterpene
11	16.72	14.21%	Limonene	1029.50	Monoterpene
12	16.79	37.63%	1,8-Cineole	1031.80	Monoterpene Ether
13	17.86	0.91%	gamma-Terpinene	1054.00	Monoterpene
14	19.08	0.11%	Terpinolene	1092.10	Monoterpene
15	19.54	6.94%	Linalool	1099.00	Monoterpenol
16	21.31	0.30%	Camphor	1147.55	Monoterpene Ketone
17	22.26	0.12%	delta-Terpineol	1166.00	Monoterpenol
18	22.60	2.14%	Terpinen-4-ol	1180.57	Monoterpenol
19	23.12	5.06%	alpha-Terpineol	1191.71	Monoterpenol
20	25.34	0.08%	Linalyl acetate	1263.80	Monoterpene Ester
21	26.08	0.03%	Geranial	1272.00	Monoterpene Aldehyde
22	26.50	0.26%	Bornyl acetate	1288.29	Monoterpene Ester
23	27.56	0.30%	delta-Terpinyl acetate	1316.50	Monoterpene Ester
24	28.40	0.03%	delta-Elemene	1335.83	Sesquiterpene
25	28.68	10.57%	alpha-Terpinyl acetate	1353.00	Monoterpene Ether
26	29.05	1.08%	Eugenol	1365.89	Phenylpropanoid
27	30.15	0.44%	beta-Elemene	1389.20	Sesquiterpene
28	30.53	0.85%	Methyl Eugenol	1407.27	Phenylpropanoid
29	30.78	0.22%	alpha-Gurjunene	1412.00	Sesquiterpene
30	31.12	1.35%	beta-Caryophyllene	1427.14	Sesquiterpene
31	31.74	0.15%	alpha-Guaiene	1438.67	Sesquiterpene
32	32.21	0.06%	(E)-Isoeugenol	1460.00	Phenylpropanoid
33	32.27	0.02%	alpha-Humulene	1461.43	Sesquiterpene
34	32.45	0.06%	allo-Aromadendrene	1471.00	Sesquiterpene
35	33.25	0.11%	Germacrene D	1484.71	Sesquiterpene
36	33.52	0.16%	beta-Selinene	1487.57	Sesquiterpene
37	33.79	0.03%	cis-alpha-Bisabolene	1502.00	Sesquiterpene
38	34.05	0.08%	gamma-Cadinene	1515.29	Sesquiterpene
39	34.28	0.14%	delta-Cadinene	1524.14	Sesquiterpene
40	36.18	0.18%	Caryophyllene oxide	1594.86	Sesquiterpene Ether
41	38.35	0.01%	beta-Eudesmol	1650.75	Sesquiterpenol
42	38.39	0.01%	alpha-Eudesmol	1652.86	Sesquiterpenol